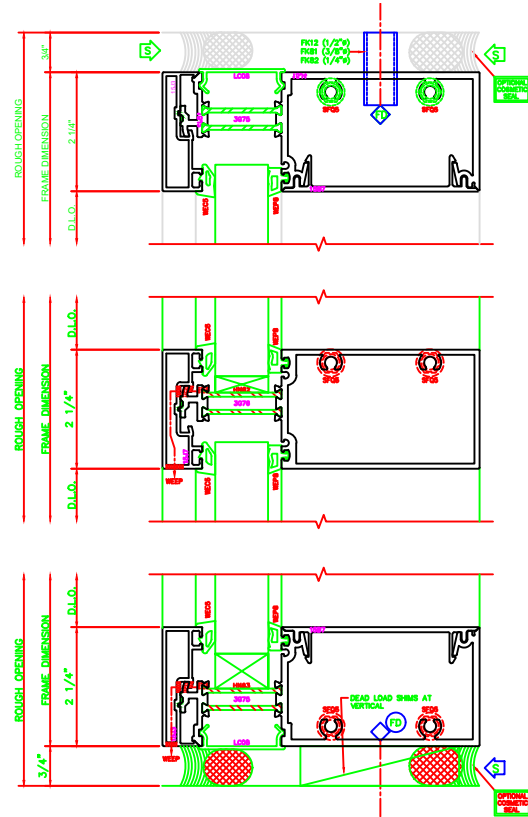
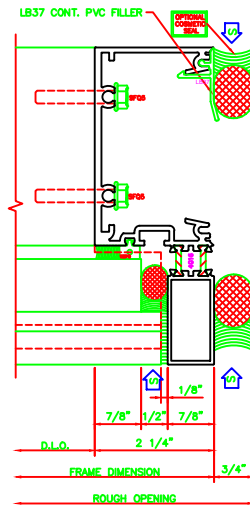
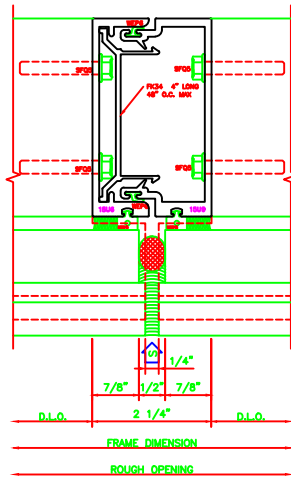
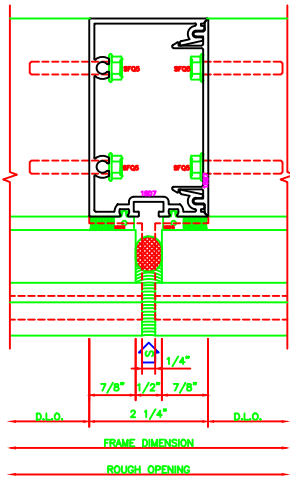
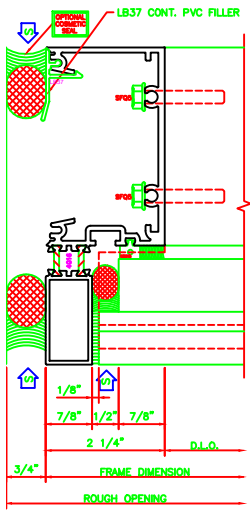


420 S.S.G. JAMB
5500 6"

624 S.S.G. VERT.
5500 6"

625 S.S.G. EXP. VERT.
5500 6"

421 S.S.G. JAMB
5500 6"



100 O.G. HEAD
5500 6"

500 O.G. HORZ.
5500 6"

200 O.G. HORZ.
5500 6"

NOTE:
MAXIMUM REACTION FOR
55000 SCREW SPLINE SYSTEM IS
1600# ● INTERMEDIATE, 500 # ●
JAMBS. FOR HIGHER LOADS USE
MULLION 1\"/>

NOTE:
MAXIMUM REACTION FOR
55000 SCREW SPLINE SYSTEM IS
1600# ● INTERMEDIATE, 500 # ●
JAMBS. FOR HIGHER LOADS USE
MULLION 1\"/>